

# Mount Airy Casino Resort PGCB Table Games Hearing

March 18th , 2010



# Overview of the Property

- George Toth – President and C.E.O.
- Mount Airy was the first stand alone casino resort in Pennsylvania.
- In addition to its state of the art gaming floor with over 2400 slot machines and electronic table games, Mount Airy, unlike some of its competitors, offers a full range of resort amenities.
  - This includes a luxury hotel, spa, premier fine dining restaurants, an 18 hole golf course, and a night club that offers live entertainment
- On December 20, 2006 Mount Airy was approved for its Category 2 License
- Commenced Operations on October 22, 2007
- In February 2010, Mount Airy filed its petition to approve its table game operations certificate
- Currently over 800 people with quality living wage jobs
- 96.82% of these employees are Pennsylvania Residents.
- Since opening Mount Airy has generated over \$216 million in tax revenue for the Commonwealth

# Table Gaming

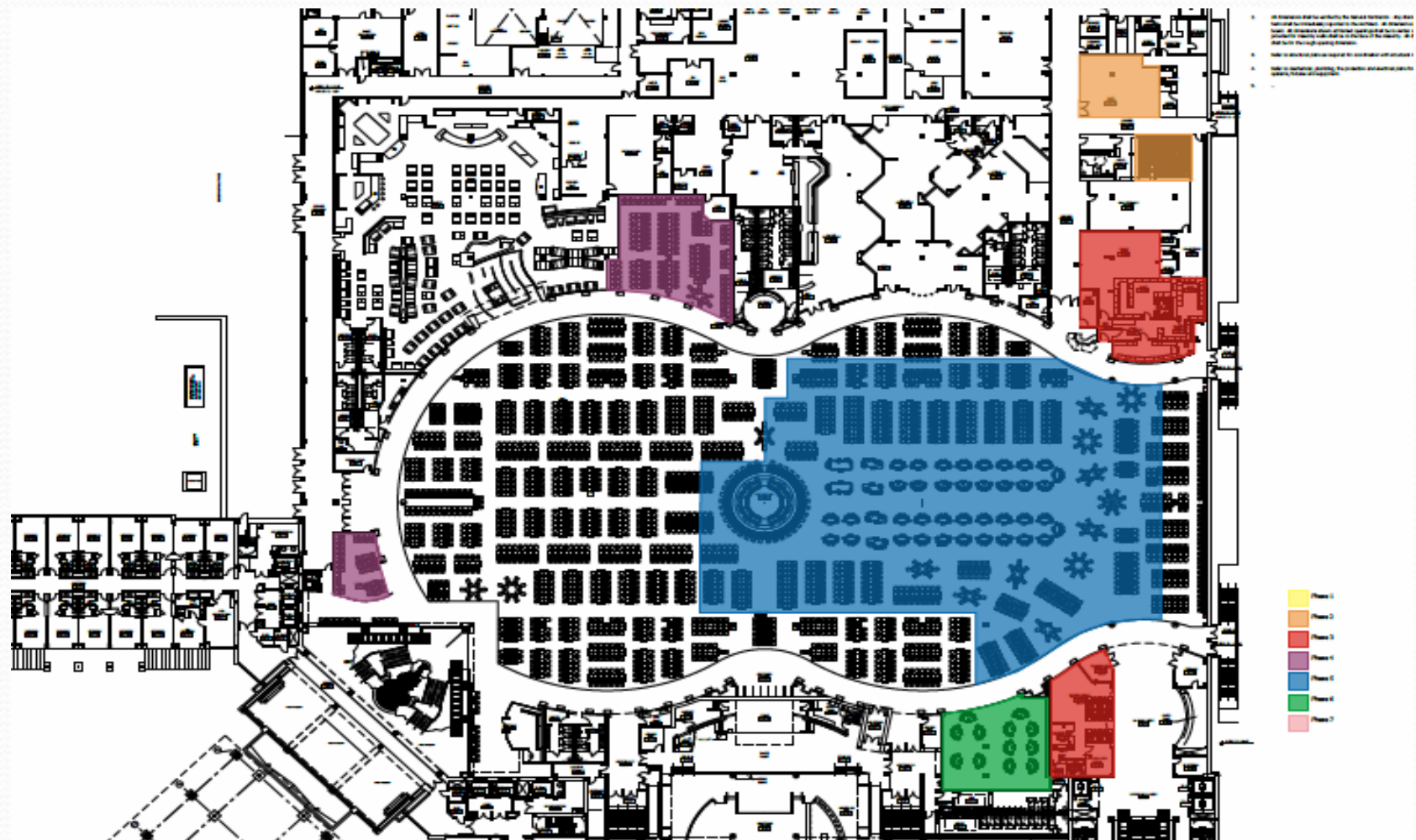
- With the implementation of table games, Mount Airy is seeking Board approval to add 68 gaming tables to its current facility including full variants of poker, blackjack, craps, roulette and various asian tile games
- In order to accommodate the introduction of table games into its existing facility, Mount Airy is currently undergoing significant renovations to its existing facility
- Adding table games to Mount Airy's operation will only further serve to enhance the positive economic and social benefits that Mount Airy has brought to the Poconos
- This will be accomplished by the creation of some 330 full time and 150 part time employment positions



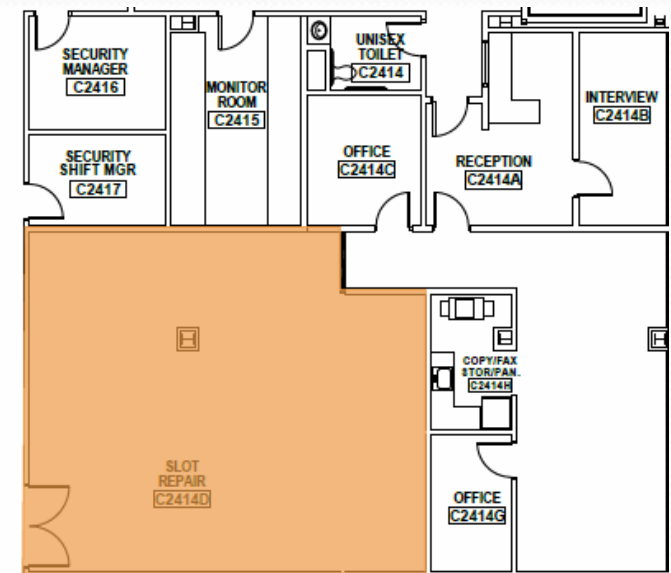
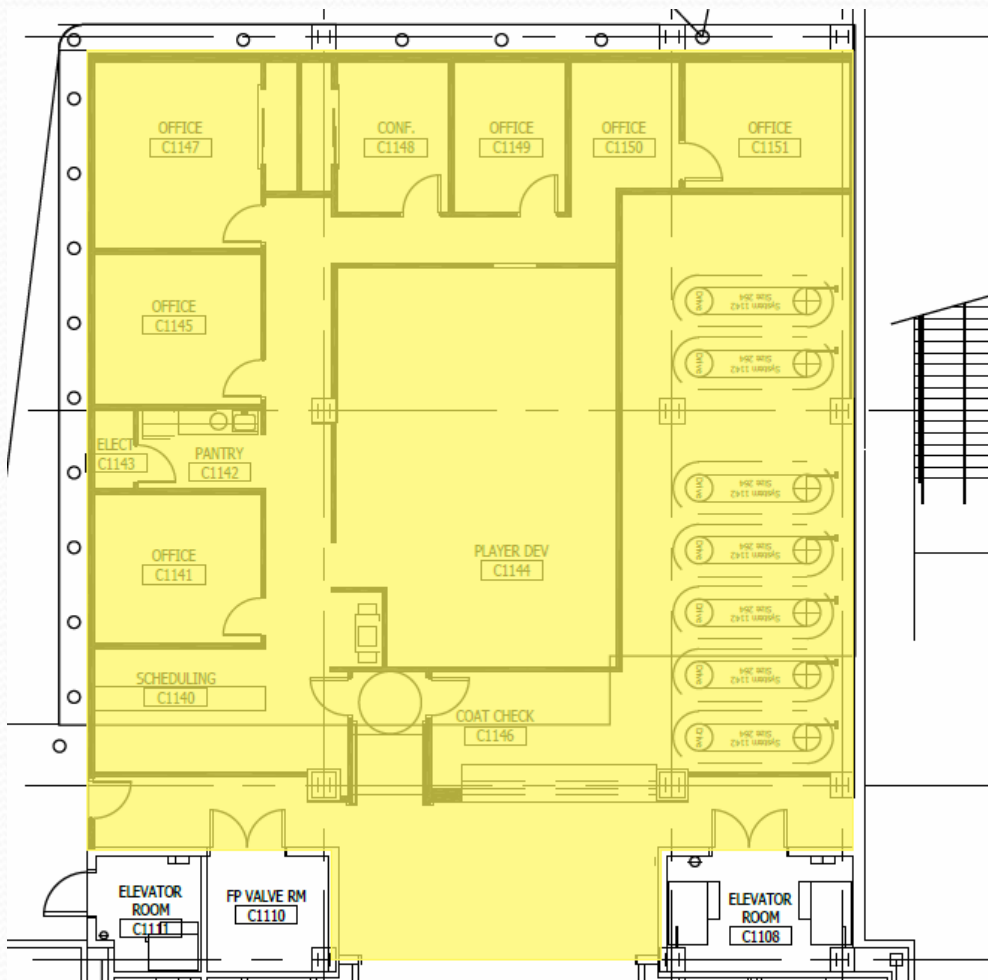
# Benefits to the Community

- In addition to the creation of 480 new jobs, the addition of table games will also create between 75 to 100 construction jobs
- Currently 36.8% of Mount Airy's work force is made up of minorities and 50.06% are women
- The introduction of new jobs will serve to increase the local tax base
- The increased revenues that will be seen through table games will result in more gaming tax paid to the Commonwealth for projects and initiatives state wide

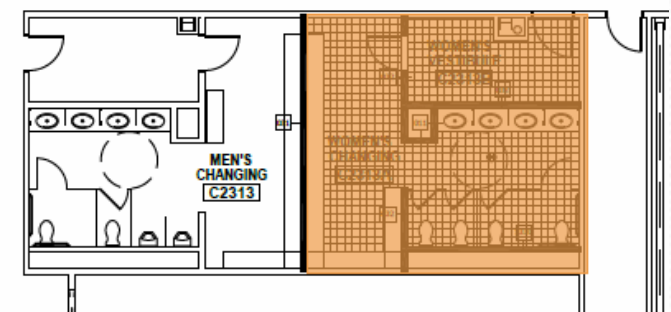
# Table Game Expansion



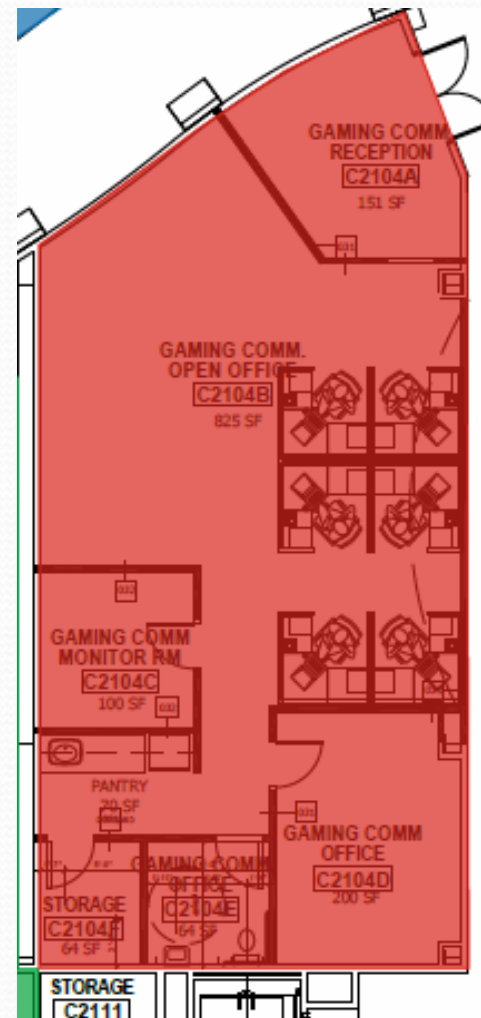
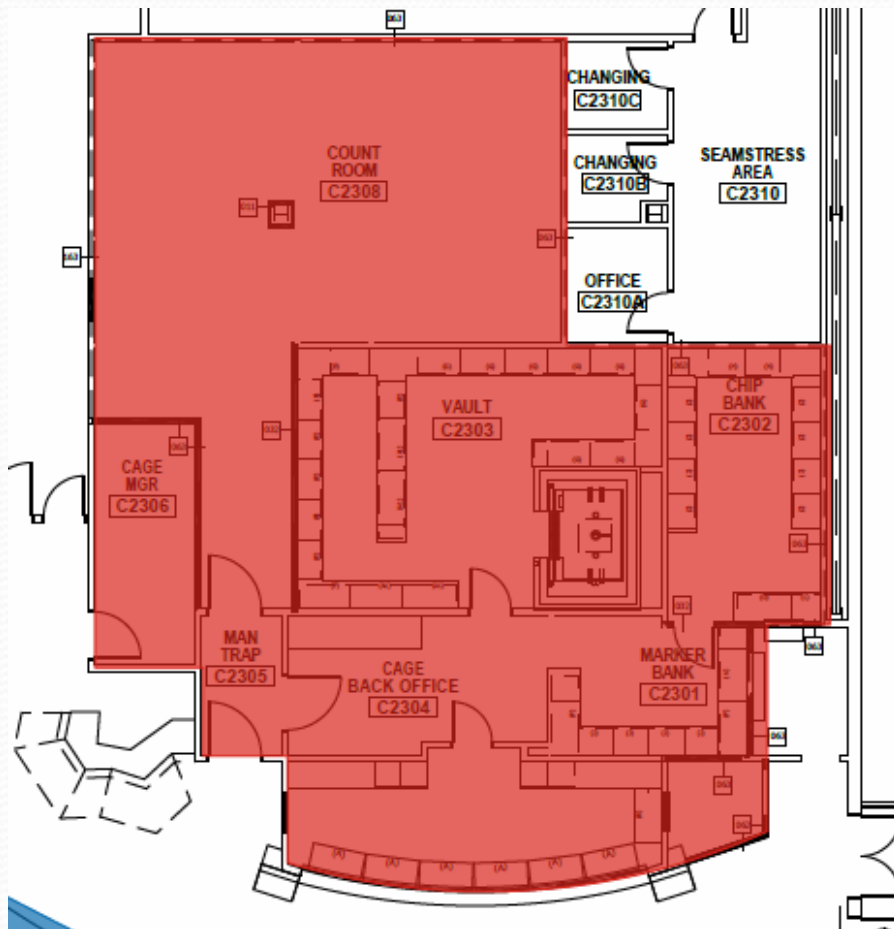
# Phase 1 and Phase 2



SERVICE CORRIDOR C2401

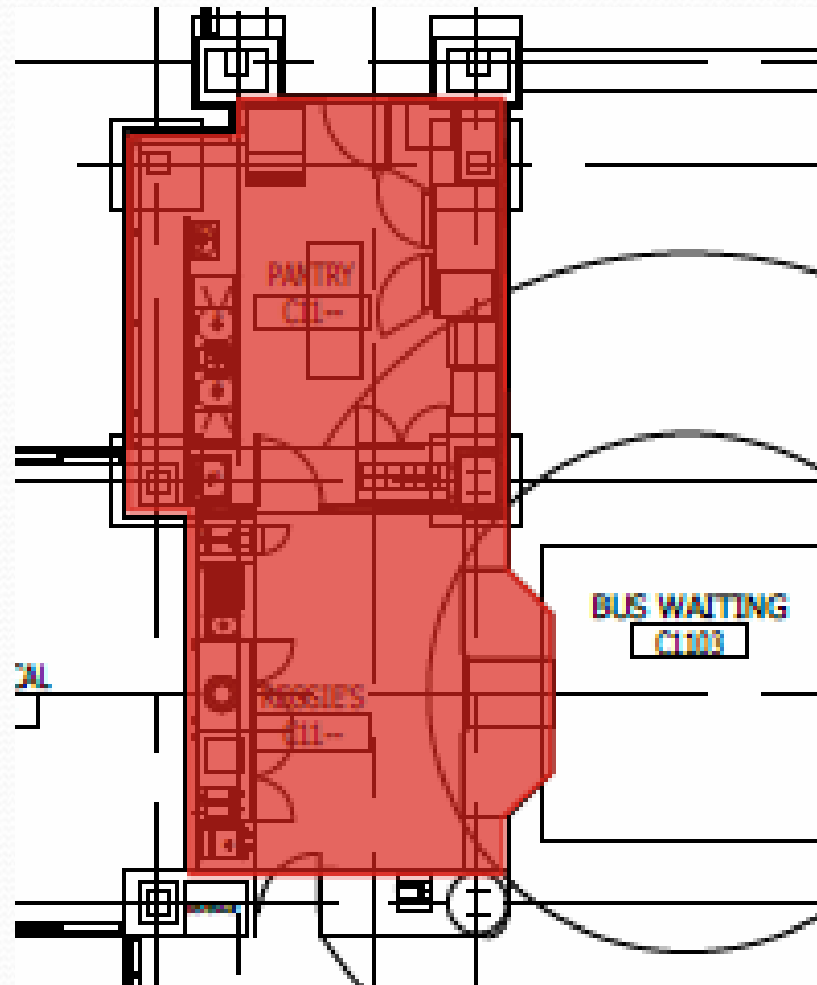


# Phase 3



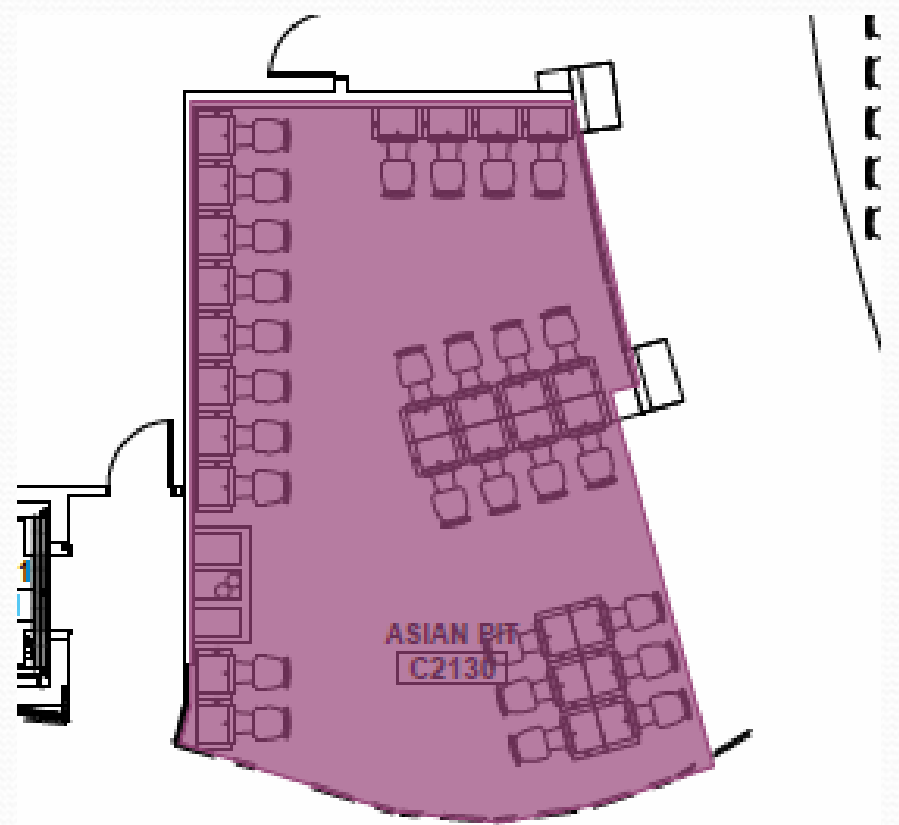
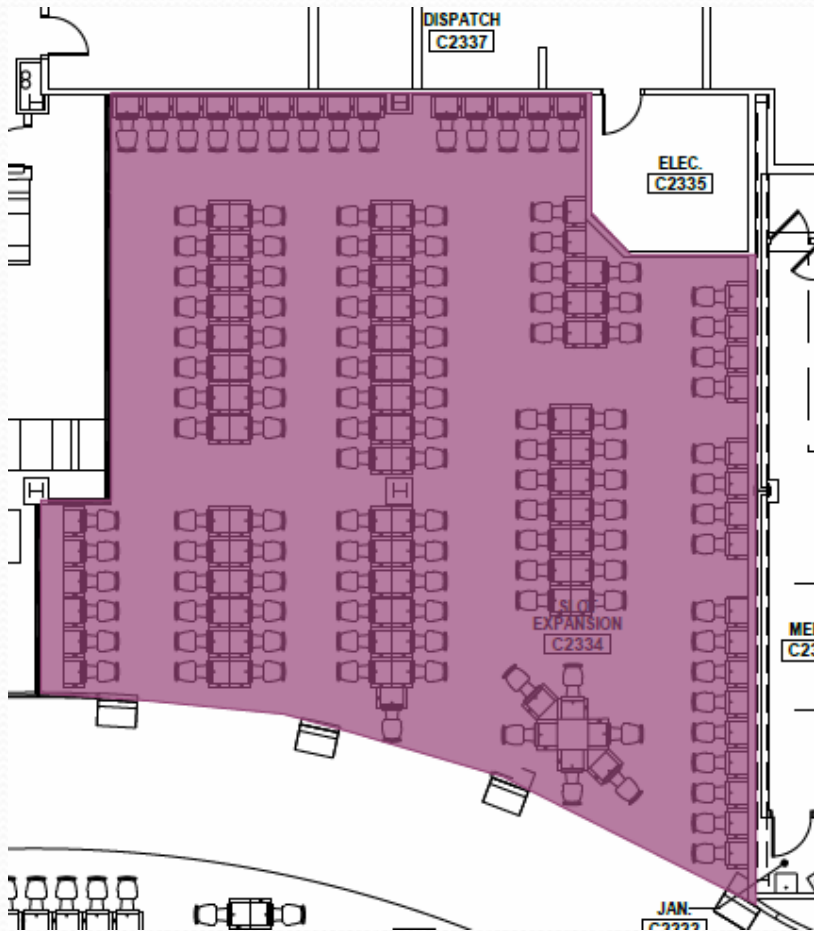
CASINO LOBBY  
C2101

# Phase 3 Continued

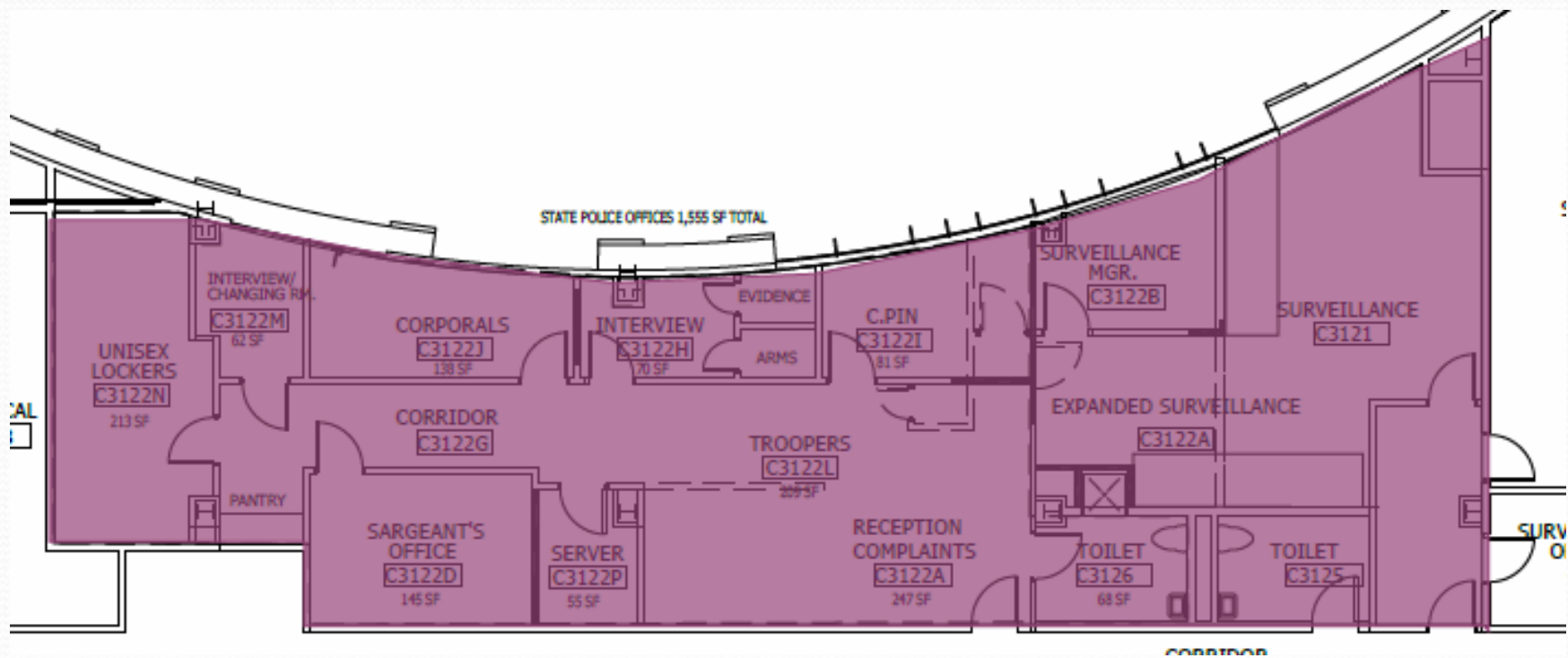




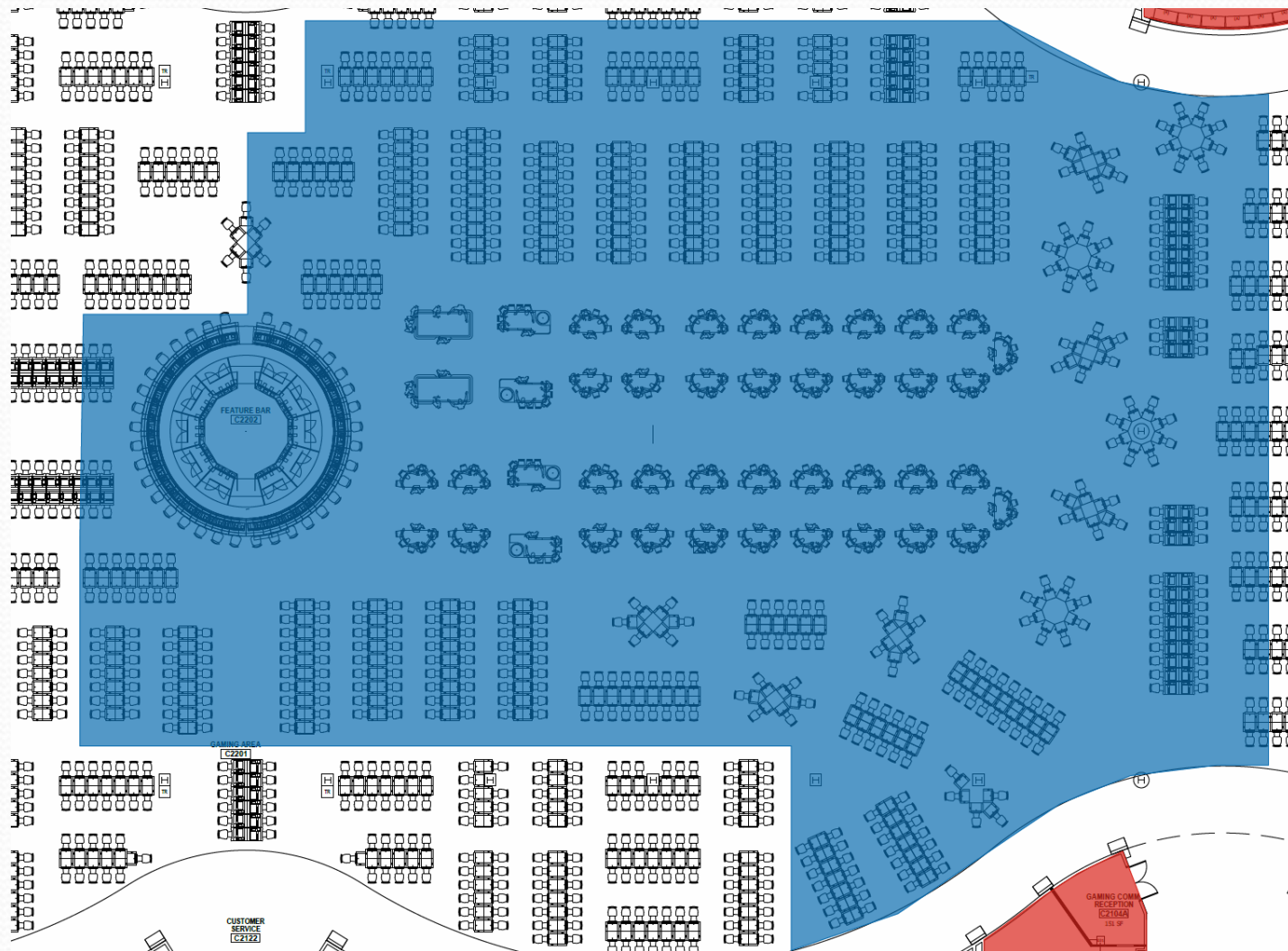
# Phase 4



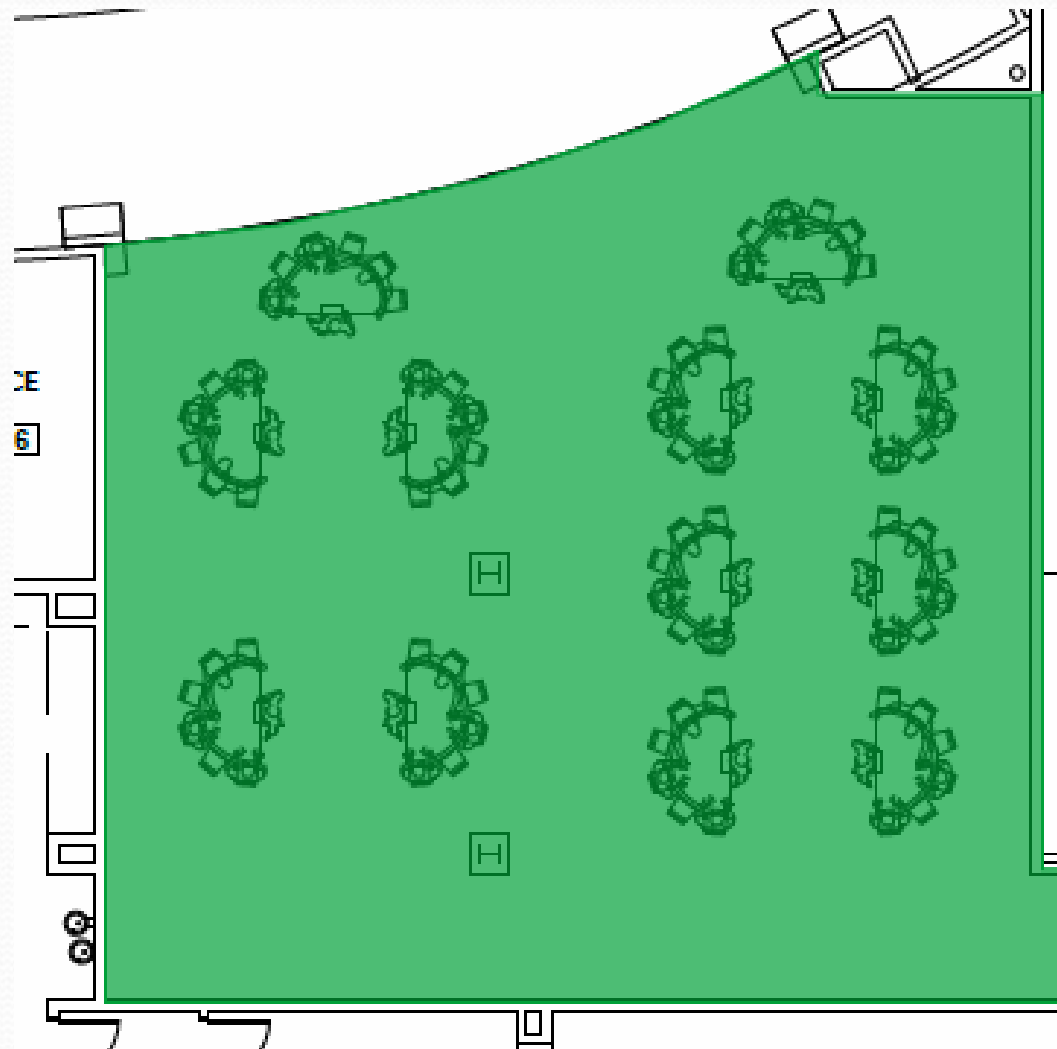
# Phase 4 Continued



# Phase 5



# Phase 6



# Phase 7

