

APPENDIX A

FIGURES

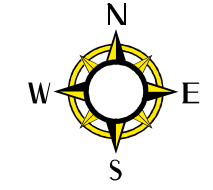
PENNONI ASSOCIATES, INC.
Consulting Engineers

LIST OF FIGURES

- FIGURE 1A : PROJECT SITE & STUDY AREA
- FIGURE 1B : CONCEPTUAL SITE PLAN
- FIGURE 1C-1 : NEW GIRARD AVENUE INTERCHANGE
- FIGURE 1C-2 : NEW GIRARD AVENUE INTERCHANGE
- FIGURE 1D-1 : EXISTING ACCESS TO I-95
- FIGURE 1D-2 : ACCESS TO I-95 WITH THE NEW GIRARD AVENUE INTERCHANGE
- FIGURE 1E : EXISTING TRANSIT FACILITIES
- FIGURE 2A : EXISTING VOLUME - WEEKDAY MORNING PEAK HOUR
- FIGURE 2B : EXISTING VOLUME - WEEKDAY EVENING PEAK HOUR
- FIGURE 2C : EXISTING VOLUME - SATURDAY EVENING PEAK HOUR
- FIGURE 3A : PRE-DEVELOPMENT VOLUME (2007) - WEEKDAY MORNING PEAK HOUR
- FIGURE 3B : PRE-DEVELOPMENT VOLUME (2007) - WEEKDAY EVENING PEAK HOUR
- FIGURE 3C : PRE-DEVELOPMENT VOLUME (2007) - SATURDAY EVENING PEAK HOUR
- FIGURE 4A : PRE-DEVELOPMENT VOLUME (2009) - WEEKDAY MORNING PEAK HOUR
- FIGURE 4B : PRE-DEVELOPMENT VOLUME (2009) - WEEKDAY EVENING PEAK HOUR
- FIGURE 4C : PRE-DEVELOPMENT VOLUME (2009) - SATURDAY EVENING PEAK HOUR
- FIGURE 5A : PRE-DEVELOPMENT VOLUME (2011) - WEEKDAY MORNING PEAK HOUR
- FIGURE 5B : PRE-DEVELOPMENT VOLUME (2011) - WEEKDAY EVENING PEAK HOUR
- FIGURE 5C : PRE-DEVELOPMENT VOLUME (2011) - SATURDAY EVENING PEAK HOUR
- FIGURE 6A : POST-DEVELOPMENT VOLUME - TEMPORARY CASINO (2007)
WEEKDAY MORNING PEAK HOUR
- FIGURE 6B : POST-DEVELOPMENT VOLUME - TEMPORARY CASINO (2007)
WEEKDAY EVENING PEAK HOUR
- FIGURE 6C : POST-DEVELOPMENT VOLUME - TEMPORARY CASINO (2007)
SATURDAY EVENING PEAK HOUR
- FIGURE 7A : POST-DEVELOPMENT VOLUME - PHASE 1 CASINO (2009)
WEEKDAY MORNING PEAK HOUR
- FIGURE 7B : POST-DEVELOPMENT VOLUME - PHASE 1 CASINO (2009)
WEEKDAY EVENING PEAK HOUR
- FIGURE 7C : POST-DEVELOPMENT VOLUME - PHASE 1 CASINO (2009)
SATURDAY EVENING PEAK HOUR
- FIGURE 8A : POST-DEVELOPMENT VOLUME - PHASE 1 CASINO (2011)
WITH NEW GIRARD AVENUE INTERCHANGE - WEEKDAY MORNING PEAK HOUR
- FIGURE 8B : POST-DEVELOPMENT VOLUME - PHASE 1 CASINO (2011)
WITH NEW GIRARD AVENUE INTERCHANGE - WEEKDAY EVENING PEAK HOUR
- FIGURE 8C : POST-DEVELOPMENT VOLUME - PHASE 1 CASINO (2011)
WITH NEW GIRARD AVENUE INTERCHANGE - SATURDAY EVENING PEAK HOUR
- FIGURE 9A : DISTRIBUTION AND ASSIGNMENT OF PROJECT TRAFFIC
WITH EXISTING INFRASTRUCTURE
- FIGURE 9B : DISTRIBUTION AND ASSIGNMENT OF PROJECT TRAFFIC
WITH NEW GIRARD AVENUE INTERCHANGE
- FIGURE 10 : HEAVY VEHICLE ROUTES
- FIGURE 12 : GEOMETRY OF RELOCATED RICHMOND STREET AND
THE DELAWARE AVENUE EXTENSION



Pennoni Associates Inc.
3001 Market Street
Philadelphia, PA 19104



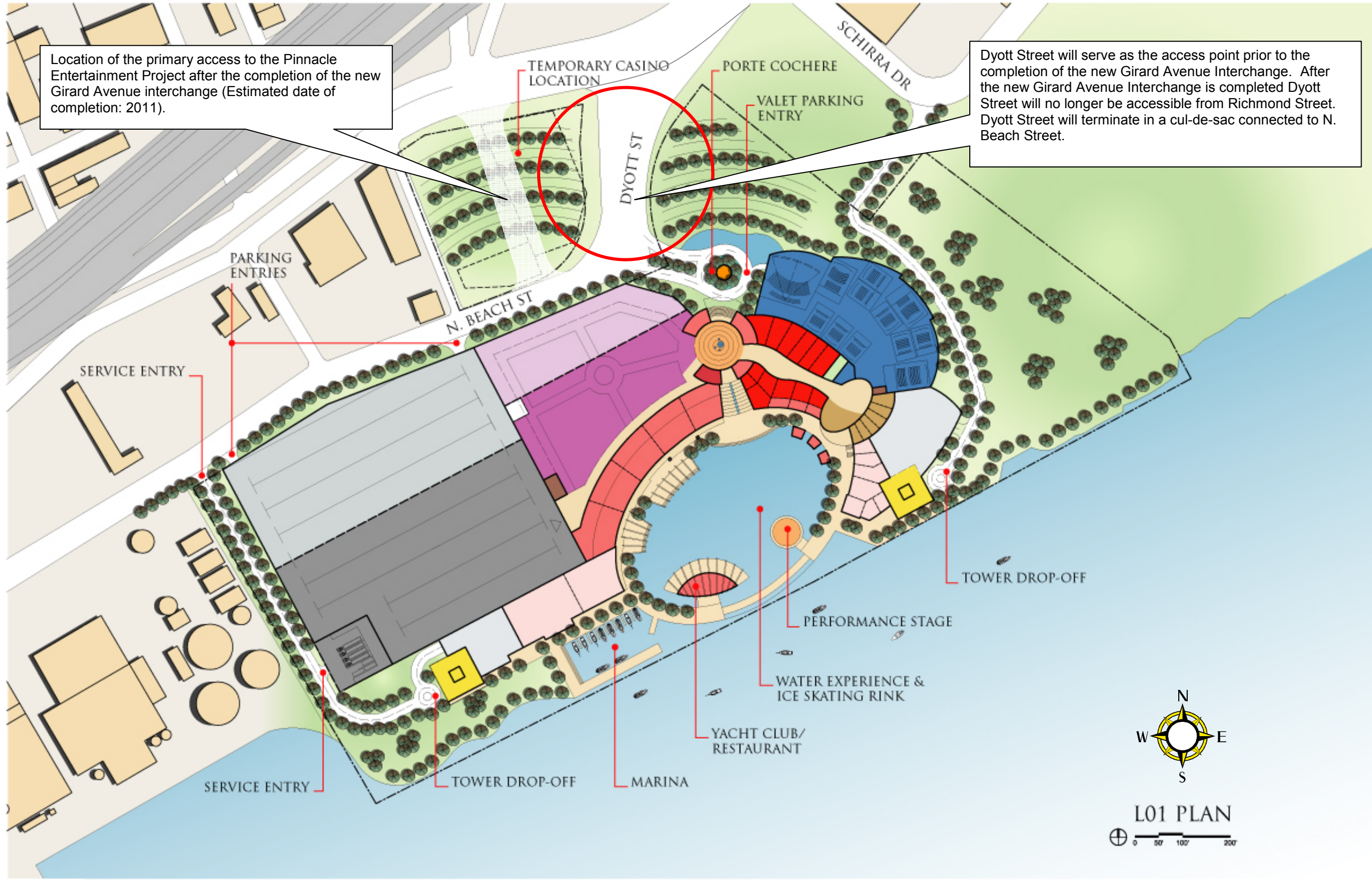
-  **PROJECT SITE**
-  **STUDY AREA**
-  **SIGNALIZED**
-  **UNSIGNALIZED**



FIGURE 1A
PROJECT SITE
& STUDY AREA



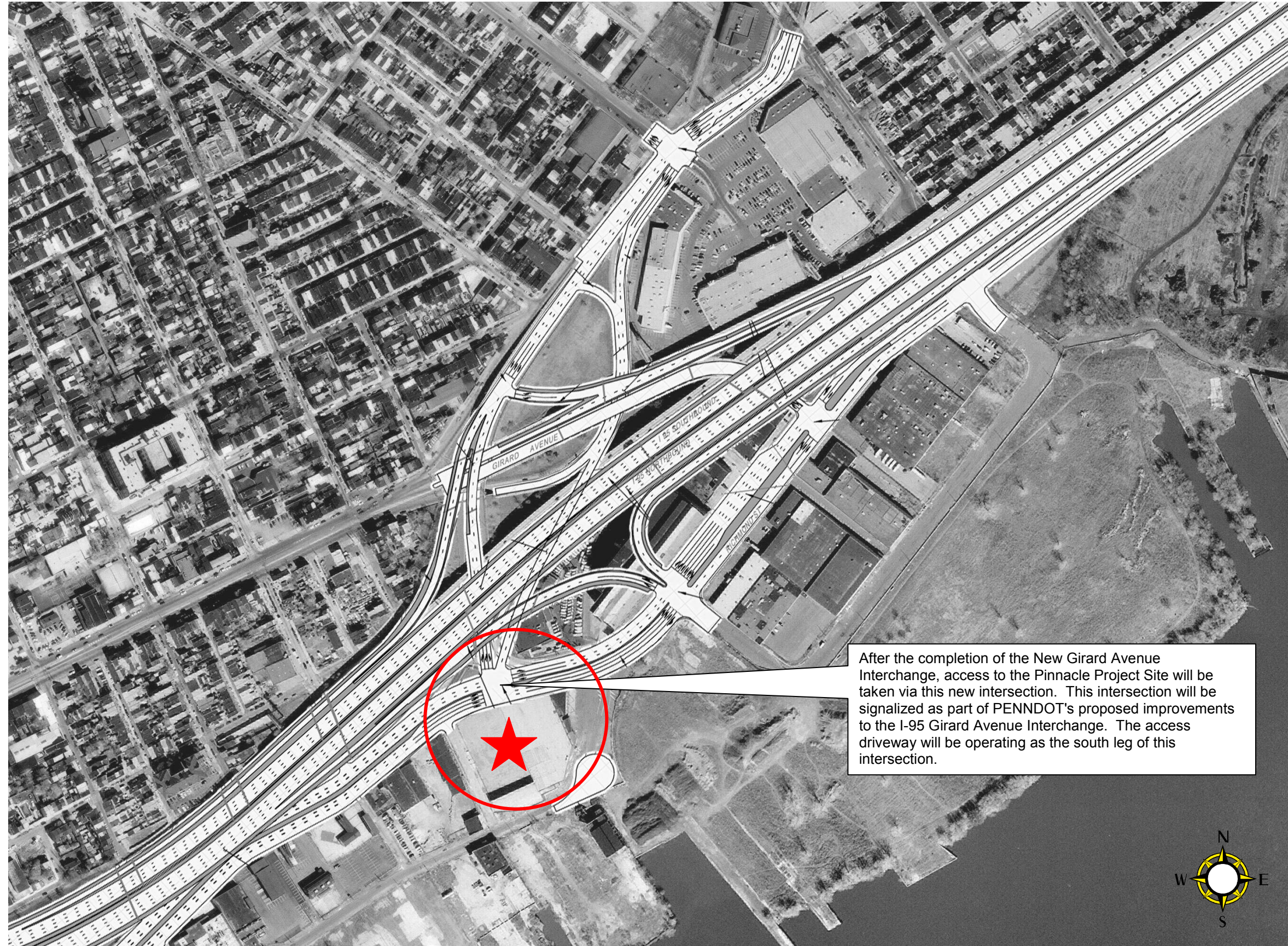
Pennoni Associates Inc.
3001 Market Street
Philadelphia, PA 19104



Location of the primary access to the Pinnacle Entertainment Project after the completion of the new Girard Avenue interchange (Estimated date of completion: 2011).

Dyott Street will serve as the access point prior to the completion of the new Girard Avenue Interchange. After the new Girard Avenue Interchange is completed Dyott Street will no longer be accessible from Richmond Street. Dyott Street will terminate in a cul-de-sac connected to N. Beach Street.

**FIGURE 1B
CONCEPTUAL
SITE PLAN**



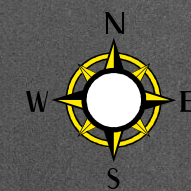
After the completion of the New Girard Avenue Interchange, access to the Pinnacle Project Site will be taken via this new intersection. This intersection will be signalized as part of PENNDOT's proposed improvements to the I-95 Girard Avenue Interchange. The access driveway will be operating as the south leg of this intersection.



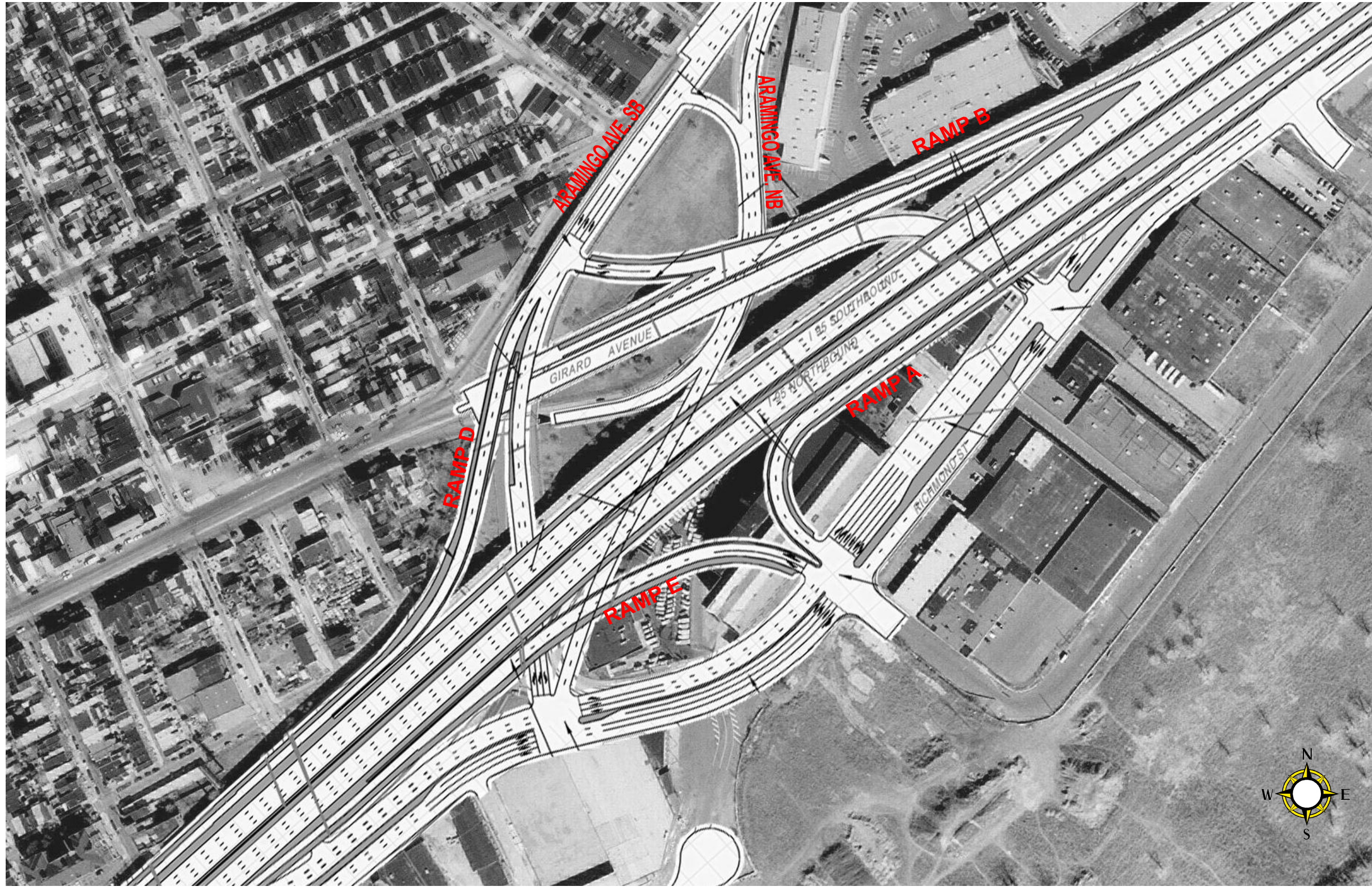
PROJECT SITE



Pennoni Associates Inc.
3001 Market Street
Philadelphia, PA 19104



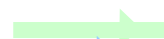



**FIGURE 1C-1
NEW GIRARD
AVENUE
INTERCHANGE**



Pennoni Associates Inc.
3001 Market Street
Philadelphia, PA 19104

FIGURE 1C-2
NEW GIRARD
AVENUE
INTERCHANGE

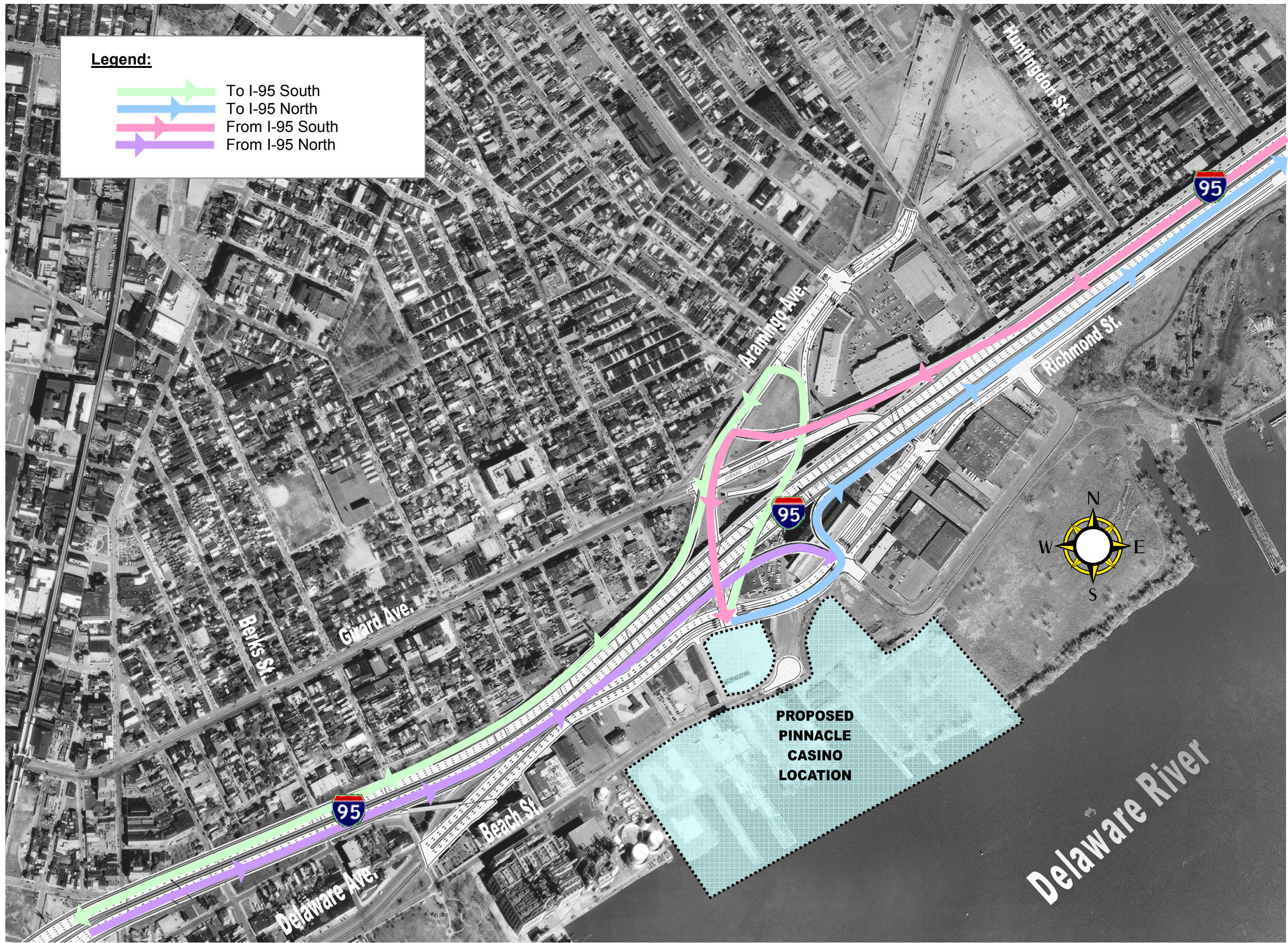
Legend:

-  To I-95 South
-  To I-95 North
-  From I-95 South
-  From I-95 North



Pennoni Associates Inc.
3001 Market Street
Philadelphia, PA 19104

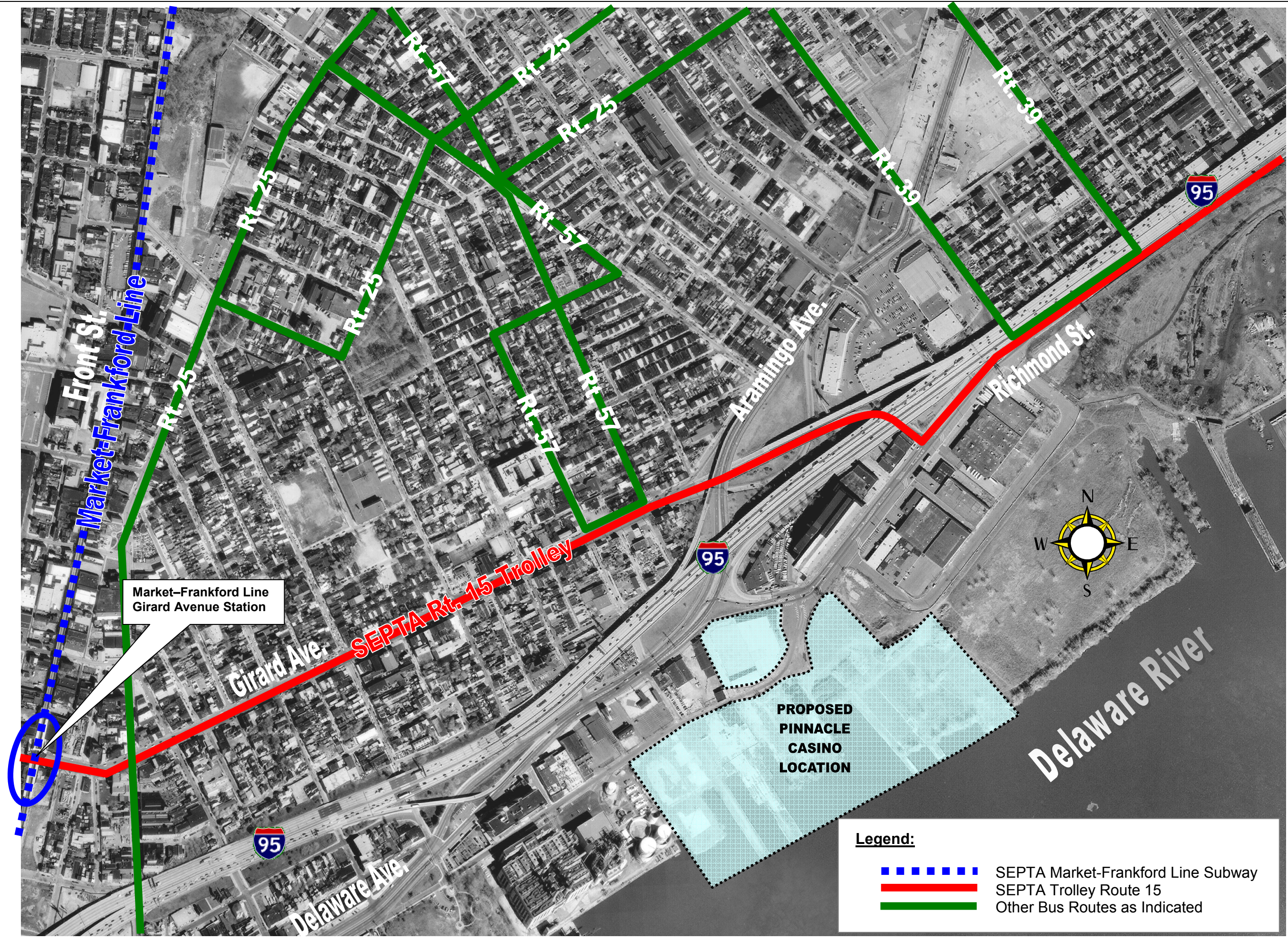
FIGURE 1D-1
EXISTING
ACCESS TO I-95



**FIGURE 1D-2
ACCESS TO I-95 WITH
THE NEW GIRARD
AVENUE
INTERCHANGE**






Pennoni Associates Inc.
3001 Market Street
Philadelphia, PA 19104



Market-Frankford Line
Girard Avenue Station

PROPOSED
PINNACLE
CASINO
LOCATION

Legend:

-  SEPTA Market-Frankford Line Subway
-  SEPTA Trolley Route 15
-  Other Bus Routes as Indicated

**FIGURE 1E
EXISTING
TRANSIT
FACILITIES**